

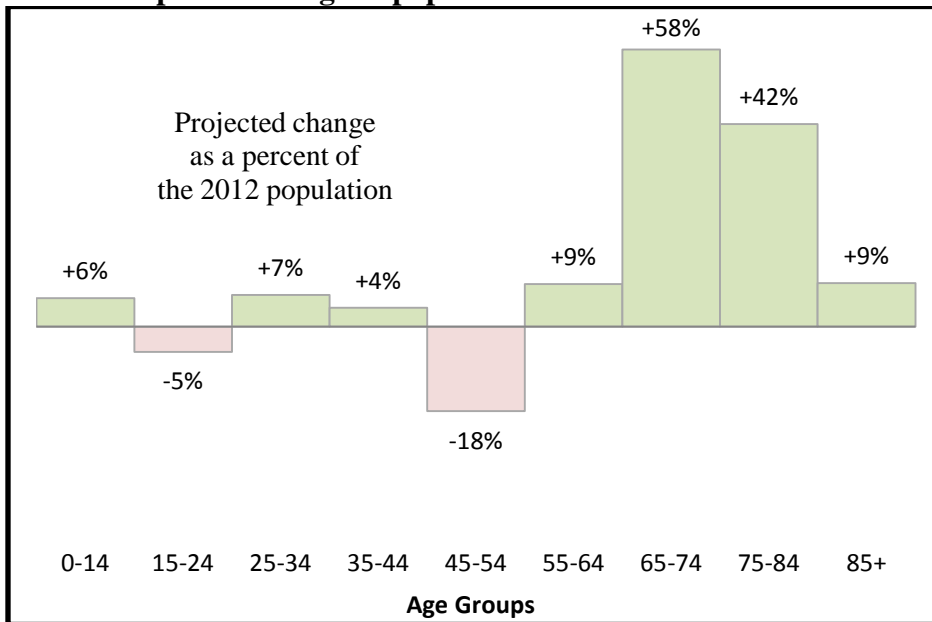


Maine's Aging Demographic

Right now, Maine's population looks like this:

- The oldest population by median age in the country
- The highest concentration of baby boomers per capita
- Lives rurally, away from service centers (most rural)
- Lowest 0-18 population
- Very low, if not the lowest, rate of in-migration
- High concentration of working family caregivers
- High rate of Alzheimer's and related dementias
- Higher than average poverty rate of those over 65

Maine's expected change in population between 2012 and 2022*

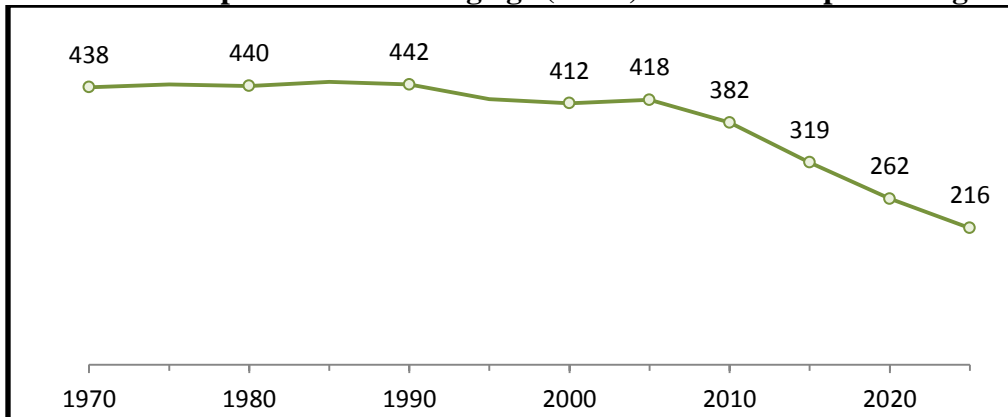


Maine has the nation's third-lowest number of working age adults (age 20-to-64)*

The health care and social service sector has a large percentage of workers 55 and over. This sector will have higher replacement worker needs because jobs in this sector are expected to increase faster than average between 2010 and 2020.

ME DOL, "The Maine Labor Force – Aging and Growing Slowly" May 2013.

The number of persons of working age (20-64) for each 100 persons age 65+*



This population trend doesn't only affect the workforce. Working age people need to care for older family members. This chart demonstrates the change in available workers and caregivers.

*Fralich, J. et al., Older Adults and Adults with Disabilities: Population and Service Use Trends in Maine, 2012 Edition. (Chartbook). Portland, ME: University of Southern Maine, Muskie School of Public Service; 2012. Available at: <http://muskie.usm.maine.edu/DA/Adults-Disabilities-Maine-Service-Use-Trends-chartbook-2012.pdf>